

# ZXM6-60-B Series

Znshinesolar **5BB Black** Monocrystalline PV Module



60

**Mono** Poly Solutions

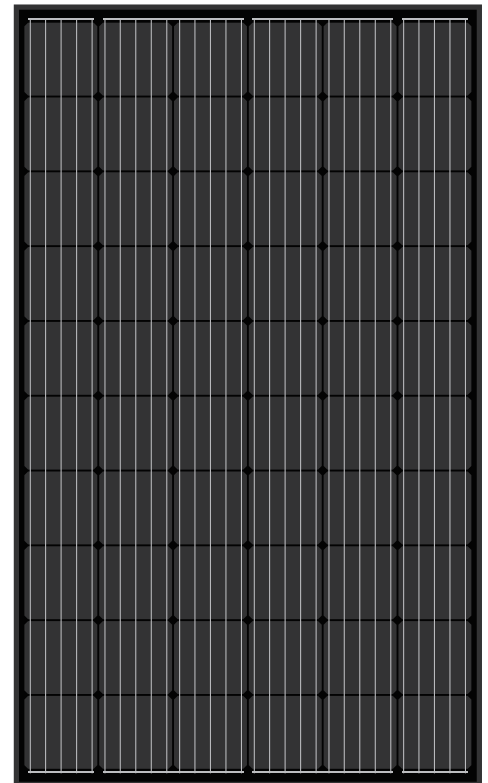
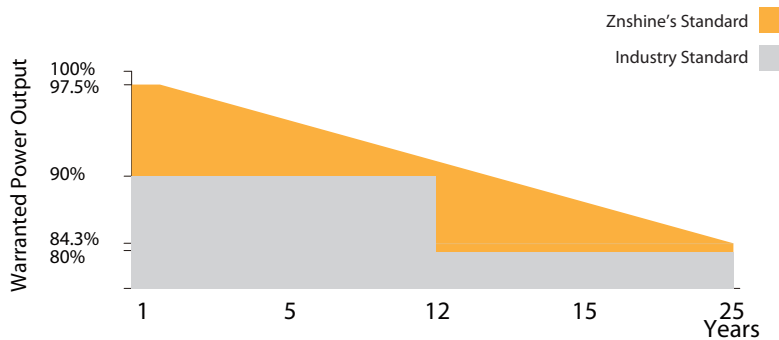
**290W | 295W | 300W | 305W | 310W**

Made with selected materials and components to grant quality, duration, efficiency and through outputs, the ZXM6-60 monocrystalline modules by ZNSHINE SOLAR represent a highly flexible solution for diverse installation types, from industrial rooftop plants to small home PV systems or large ground surfaces. This allows you to produce clean energy while reducing your energy bill.

ZNSHINE SOLAR' S ZXM6-60 monocrystalline solar modules are tested and approved by international acknowledged laboratories, so that we can offer our customers a reliable and price-quality optimized product. The linear warranty on product outputs further ensures increased security and return on investments over time.

**12 years product warranty/25 years output warranty**

**0.55% Annual Degradation over 25 years**



### Tier 1 & Bankable

Well known trade mark in China; Tier 1 bankable brand globally



### High Efficiency

Graphene coating can increase about 2W of the module efficiency by rising around 0.5% of the light transmission



### Anti PID

Limited power degradation of ZXM6-60 module caused by PID effect is guaranteed under strict testing condition for mass production



### Improved Aesthetics

Compared to conventional modules, this full black modules have a more uniform appearance and superior aesthetics.



### Certified to withstand the most challenging environmental conditions

5400 Pa snow load  
2400 Pa wind load



### Customerization—Graphene Coating

Graphene coating modules can increase power generation and self-cleaning, also can save maintenance cost



ZNShine PV-Tech Co., LTD, founded in 1988, is a world-leading high-performance PV module manufacturer, PV power station developer, EPC and power station operator. With its state-of-the-art production lines, the company boasts module output of 5GW. Bloomberg has listed ZNShine as a global Tier 1 PV manufacturer and Top 4 reliable PV supplier.

[www.znshinesolar.com](http://www.znshinesolar.com)

# ZXM6-60-B Series | Znshinesolar 5BB Black Monocrystalline Module



## ELECTRICAL PROPERTIES | STC\*

Module Type	ZXM6-60-290/B	ZXM6-60-295/B	ZXM6-60-300/B	ZXM6-60-305/B	ZXM6-60-310/B
Nominal Power Watt Pmax(W)	290	295	300	305	310
Power Output Tolerance Pmax(%)	0~+3	0~+3	0~+3	0~+3	0~+3
Maximum Power Voltage Vmp(V)	32.0	32.2	32.4	32.7	32.9
Maximum Power Current Imp(A)	9.07	9.17	9.26	9.33	9.43
Open Circuit Voltage Voc(V)	39.3	39.5	39.7	39.9	40.1
Short Circuit Current Isc(A)	9.56	9.67	9.75	9.85	9.95
Module Efficiency (%)	17.72	18.02	18.33	18.63	18.94

\*STC (Standard Test Condition): Irradiance 1000W/m<sup>2</sup>, Module Temperature 25°C, AM 1.5  
 \*The data above is for reference only and the actual data is in accordance with the practical testing

## ELECTRICAL PROPERTIES | NMOT\*

Maximum Power Pmax(Wp)	214.5	219.0	222.3	225.8	229.3
Maximum Power Voltage Vmpp(V)	29.7	29.8	30.2	30.4	30.6
Maximum Power Current Impp(A)	7.23	7.34	7.36	7.42	7.49
Open Circuit Voltage Voc(V)	36.4	36.6	36.7	36.9	37.1
Short Circuit Current Isc(A)	7.72	7.81	7.81	7.88	7.96

\*NMOT(Nominal module operating temperature):Irradiance 800W/m<sup>2</sup>, Ambient Temperature 20°C,AM 1.5,Wind Speed 1m/s  
 \*The data above is for reference only and the actual data is in accordance with the practical testing

## TEMPERATURE RATINGS

NMOT	45°C ±2°C
Temperature coefficient of Pmax	-0.39%/°C
Temperature coefficient of Voc	-0.29%/°C
Temperature coefficient of Isc	0.05%/°C

\*Do not connect Fuse in Combiner Box with two or more strings in parallel connection

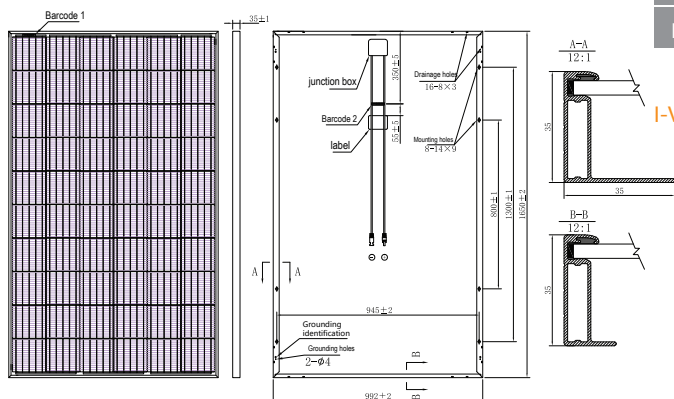
## WORKING CONDITIONS

Maximum system voltage	1000 / 1500 V DC
Operating temperature	-40°C~+85°C
Maximum series fuse	15 A
Maximum load(snow/wind)	5400 Pa / 2400 Pa

## MECHANICAL DATA

Solar cells	Mono 156.75×156.75 mm
Cells orientation	60 (6×10)
Module dimension	1650×992×35 mm
Weight	18.5 kg
Glass	High transparency,low iron,tempered Glass 3.2 mm (AR-coating)
Junction box	IP 68, 3 diodes
Cables	4 mm <sup>2</sup> ,900 mm
Connectors	MC4-compatible

## DIMENSION OF THE PV MODULE (mm)



## PACKAGING INFORMATION

Packing Type	40' HQ
Piece/Box	30
Piece/Container	840

## I-V CURVES OF THE PV MODULE

